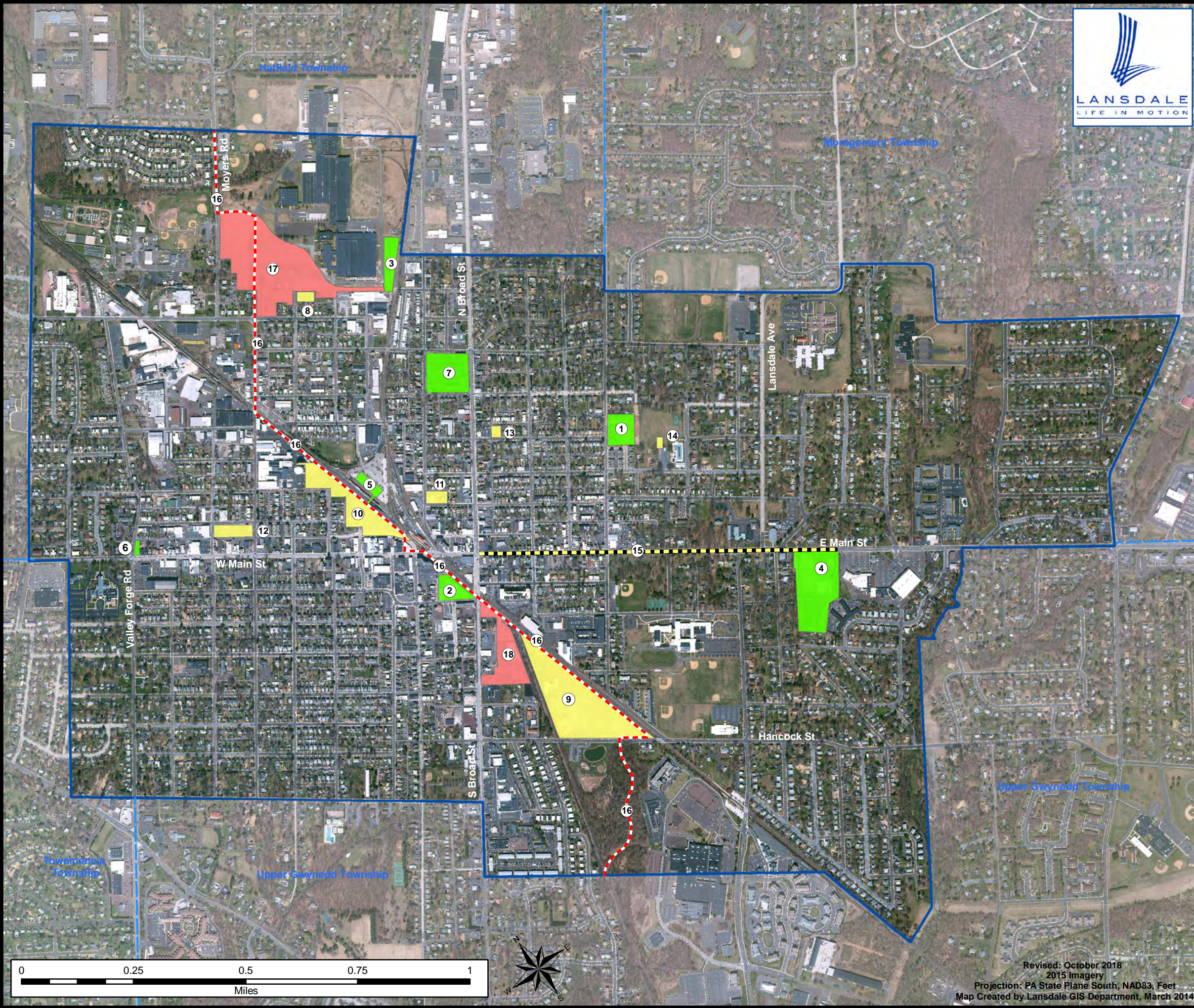


# Borough of Lansdale

## Land Development 2018



- 1 Williamson Square II: 437 N Line St**  
Developer: W.B. Homes  
Approved: 2014  
Product: 30 Twin Homes
- 2 Lansdale Borough Hall: 1 Vine St**  
Developer: Borough of Lansdale  
Approved: 2013  
Product: Municipal Complex
- 3 Septa 9th St Station: 141 W 9th St**  
Developer: Septa  
Approved: 2014  
Product: Platform Station
- 4 North Penn Commons: 606-608 E Main St**  
Developer: North Penn YMCA  
Approved: 2012  
Product: Mixed Use - 60 Apartments/ 23,000 SF Commercial
- 5 Septa Parking Garage: Lansdale Station**  
Developer: Septa  
Approved: 2014  
Product: Parking Garage: 681 Spaces
- 6 Unique Aid: 859-861 W Main St**  
Developer: Andlia L.L.C.  
Approved: 2012  
Product: Mixed Use - 3 Apartments / 13,000 SF Commercial
- 7 Elm Terrace Gardens: 660 N Broad St**  
Developer: Elm Terrace Gardens  
Approved: 2015  
Product: 44 Units

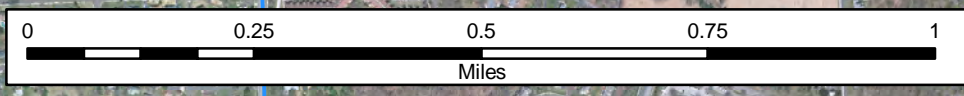
Completed Projects

- 8 Temple Equity Partners, LLC: 815 N Towamencin Ave**  
Developer: TBD  
Approved: 2012  
Product: 5 Townhomes/ 1 Twin Home
- 9 Andale Green: 135 E Hancock St**  
Developer: Jim Moulton/ Ryan Homes  
Approved: 2012  
Product: 174 Townhomes (total)/ 4 Phases
- 10 Madison Lansdale Station: Madison St**  
Developer: Equus Partners  
Approved: 2017  
Product: Mixed Use: 181 Apartments; 23,000 SF Commercial
- 11 Walnut St Apartments: 43 W Third St**  
Developer: Bennett Properties LLC  
Approved: TBD: New Construction  
Product: 145 Dwelling Units
- 12 Penn Square: 20 N Cannon Ave**  
Developer: W.B. Homes  
Approved: 2017  
Product: 40 Townhomes
- 13 Timinski Subdivision: 22-24 Fairview Ave**  
Developer: Mark Timinski  
Approved: 2016  
Product: 5 Townhomes
- 14 Fourth St Skatepark: Fourth St Park**  
Developer: Borough of Lansdale  
Approved: 2017  
Product: Skatepark
- 15 Streetscape Project:**
- 16 Liberty Bell Trail:**

Ongoing Projects

- 17 North Penn Park View: 1000 N Cannon Ave**  
Developer: TBD  
Approved: 2008/ Needs Current Review  
Product: 175 Townhomes
- 18 LUXOR at Lansdale: S Broad St**  
Developer: Westrum Development Company  
Approved: TBD  
Product: Approximately 200 Units

Future Projects



Revised: October 2018  
2015 Imagery  
Projection: PA State Plane South, NAD83, Feet  
Map Created by Lansdale GIS Department, March 2014